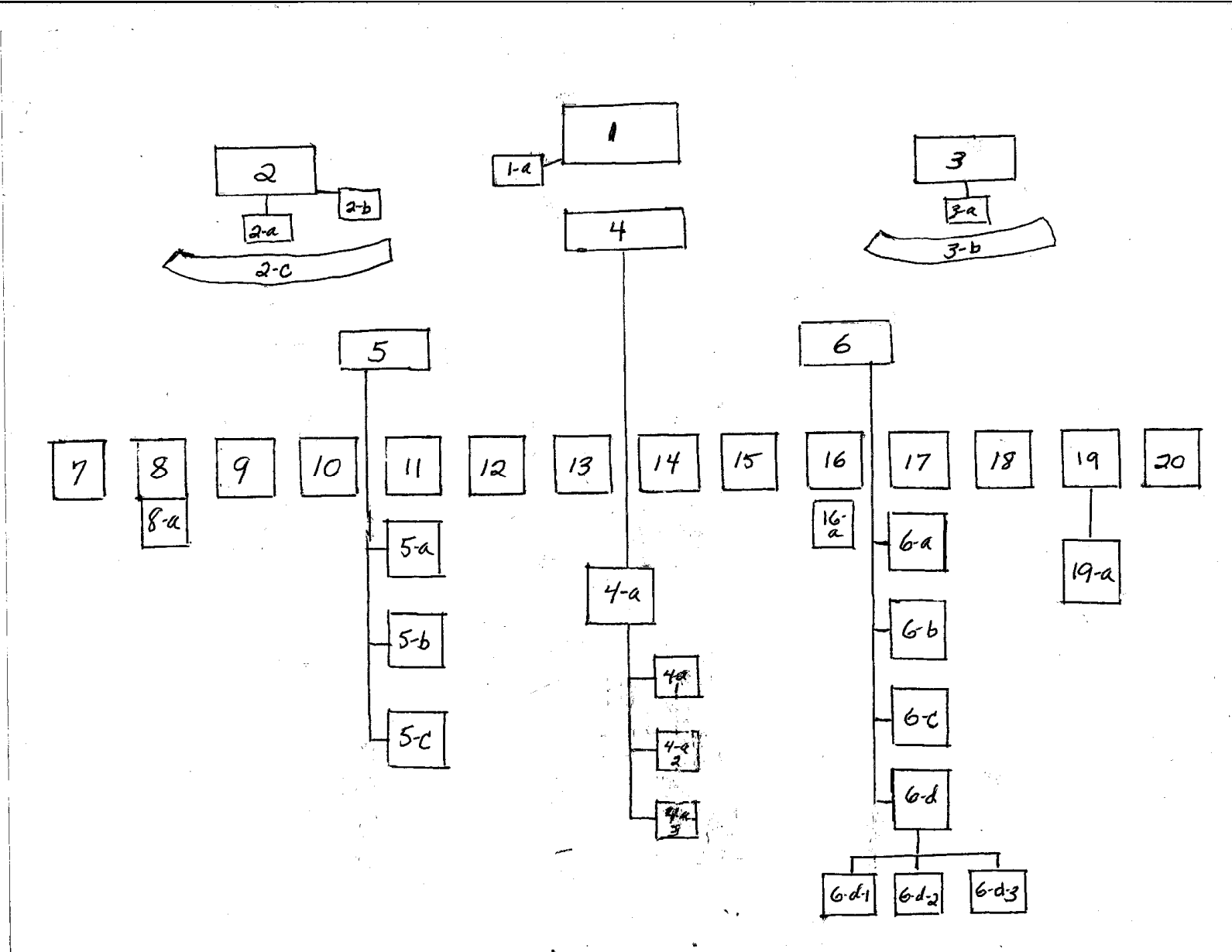


**S**

**ORGANIZATION CHART OF THE  
OBAMA WHITE HOUSE STAFF**

*Summer, 2009*

*Compiled by Bradley H. Patterson*



# KEY TO THE ORGANIZATION CHART OF THE OBAMA WHITE HOUSE STAFF

*(Staff numbers are approximate)*

## ***LEADERSHIP OFFICES AND THEIR SUBORDINATE UNITS***

1. The President
  - 1-a Presidential Aide and personal office (5)
  
2. The Vice President
  - 2-a Chief of Staff
  - 2-b Spouse of the Vice President
  - 2-c Staff of the Vice President, including his counsel, assistants for national security affairs, domestic policy, communications policy and press secretary, his economic policy adviser and others. (90)
  
3. The First Lady
  - 3-a Chief of Staff
  - 3-b Staff of the First Lady, including the Social Secretary, assistants for communications, policy and projects, scheduling, advance and others (30)
  
4. White House Chief of Staff (5)
  - 4-a Staff Secretary (4)
    - 4-a-1 Executive Clerk (10)
    - 4-a-2 Correspondence Office (Includes the Volunteer and Gifts Offices) (70)
    - 4-a-3 Records Office (25)
  
5. Deputy Chief of Staff for Policy (4)
  - 5-a Assistant for Domestic Policy and Domestic Policy Council staff. (Includes a senior policy advisor for native American affairs, a domestic AIDS policy coordinator, and includes the Office of Faith-Based and Neighborhood Partnerships) (30)
  - 5-b Assistant to the President for Economic Affairs and National Economic Council staff (20)
  - 5-c Office of Cabinet Liaison (5)

6. Deputy Chief of Staff for Operations

- 6-a Office of Appointments, Scheduling and Advance. (Includes the Travel Office) (40)
- 6-b The White House Military Office (includes the Director's office, Camp David, Air Force One, White House Communications Agency (WHCA), the Helicopter Squadron (HMX-One), five Military Aides, the White House Mess and the physician's staff) (2300)
- 6-c The Protective Units of the U. S. Secret Service (includes civilian agents, the Uniformed Division, protective research and the James Rowley Training Center) (2300)
- 6-d Office of Management and Administration (including offices for interns, photography, telephone services and the Visitors Office) (50)
  - 6-d-1 The Chief Usher and staff of the Executive Residence (90)
  - 6-d-2 National Park Service White House Liaison Office , including the staffs of the White House Visitor Center and the President's Park (90)
  - 6-d-3 GSA White House Center Service Delivery Team (215)

***SENIOR POLICY ASSISTANTS***

7. Counsel to the President (35)

8. Assistant to the President for National Security Affairs (including the Situation Room) and the NSC staff (250)

- 8-a Homeland Security Council and assistant and staff for homeland security affairs (50)  
(The NSC and the HSC are now intertwined, pursuant to the presidential memorandum of May 26, 2009.)

9. Assistant to the President for Health Policy Reform (4)

10. Assistant to the President for Energy and Climate Change (4)

11. Press Secretary to the President (20)

12. Senior Director and Assistant to the President for Public Engagement and Intergovernmental Affairs (4)

- 12-a Director of the Office of Public Engagement and Intergovernmental Affairs (25)

13. Office of Communications (includes Media Affairs, internet manager and others) (50)

14. Assistant to the President and Presidential Speechwriter, and assistants (15)

15. Office of Political Affairs (10)

16. Assistant to the President for Presidential Personnel (30) .

- 16-a Commission on White House Fellowships (has relationships with the PPO office) (6)

17. Assistant to the President for Legislative Affairs (includes Senate and House Legislative Affairs offices) (30)

Patterson: Obama Staff Organization

***SENIOR ADVISORS TO THE PRESIDENT***

18. Senior Advisor David Axelrod (4)

19. Senior Advisor Peter Rouse (4)

20. Deputy Assistant to the President and Director for Urban Affairs (4)

*VOLUNTEERS (500)*

*INTERNS (Three classes per year of 100 each)*

*APPROXIMATE TOTAL WHITE HOUSE STAFF: 6550*